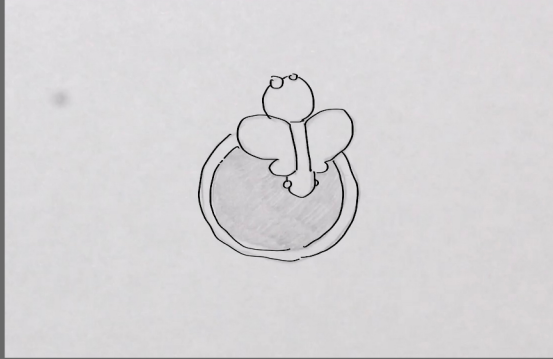


WK4-Traditional Animation

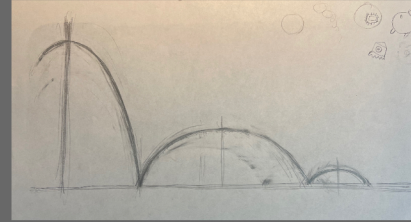
Done By MIN XUAN ZHENG

Straight ahead animation



I had lots of fun when I doing the straight ahead animation. I drew the process of a larva turns into a butterfly, and in the end, it transform to a drop of water. When I drew this animation, I felt my mind was playing a slow motion of this version.

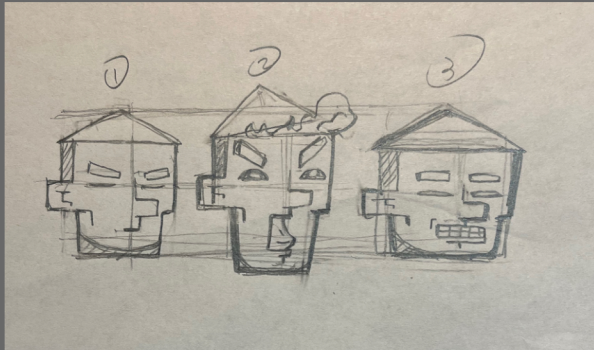
Timing and Spacing



I first drew the arc of the bouncing trace, and then drew all position of the ball on one page, these actions help me to know clearly of the speed and the volume of the ball.



Pose to Pose



Il like this character very much, before I drew the animation, I have a fairly complete story for this single character. The character is a guardian of a castle, this pose to pose animation is describing that he was disrupted by someone when he was working.

Ease out and Ease in



Il This is another animation done by pose to pose. The character I design is a naughty ghost which he is trying to misleading the direction of the way. Again, I found pose to pose can make me trace every movement clearly without changing too much shape. The three pictures above are the key frames of the animation, because I photoed 30 frames for each one, it creates more fun due to the timing.

Video Link : <https://youtu.be/0Cowq3IL0NM>