

CHARACTER DESIGN

THE WINTER made me remind the food back in my home country which called white radish lamb stew. I found many references about the history of this food, than I sorted and combined them into my characters. Firstly, I drew many draft on the paper, like poses and facial expression, though these sketches I slowly saw the personality of the character. After that, the final figure jump out.

Reference:



The color palette is in a cold mode and it isn't very contrast, I think this can make this character more like in the winter. I used a texture pen to paint the color under the outline, after I removed the line, I found the pure color can express the character more vivid.

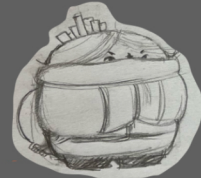
very inspired!!



after decided the element



figure out the shapes

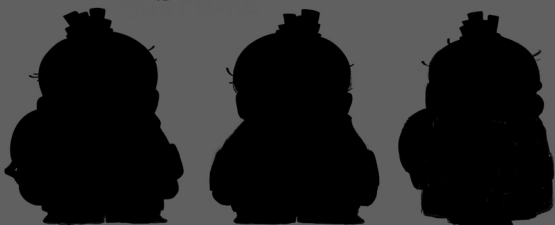


This is her shirt in the story.

color:



OUTCOME :



I drew three triangle shapes for the turnaround, and than add volume on the shape, in order to keep their outline are all consistent.